



INFORME DE ENSAYO: 370922 a 370924

Champú Blue Cap/Blue Cap Spray/Blue Cap Crema

Table with 2 columns: DATOS DE LA MUESTRA and DATOS DEL CLIENTE. Rows include MATRIZ, PRODUCTO, Referencias, Fecha de recepción, Fecha inicio de análisis, Fecha fin de análisis, and Otros.

ENSAYOS DEPARTAMENTO QUIMICA

Table with 4 columns: PNT, DETERMINACION, UNIDADES, RESULTADO. Row 1: AQ-252, Corticoides, Ver observaciones.

(x)OBSERVACIONES:

Muestras analizadas: 370922 CHAMPÚ BLUE CAP, 370923 BLUE CAP SPRAY, 370924 BLUE CAP CREMA. No se detectan corticoides en las muestras analizadas. Se adjuntan cromatogramas. Análisis realizado mediante HPLC con detector de UV-Visible.

Fecha de emisión de informe: martes, 13 de mayo de 2008

Fdo. Julio Amador Sánchez, Sección Cromatografía, Departamento de Química



Fdo. Milagros Vázquez González, Directora ALKEMI, S.A.

El informe del presente ensayo sólo concierne a la muestra procesada y no debe reproducirse salvo que se haga íntegramente y con la aprobación de ALKEMI, S.A

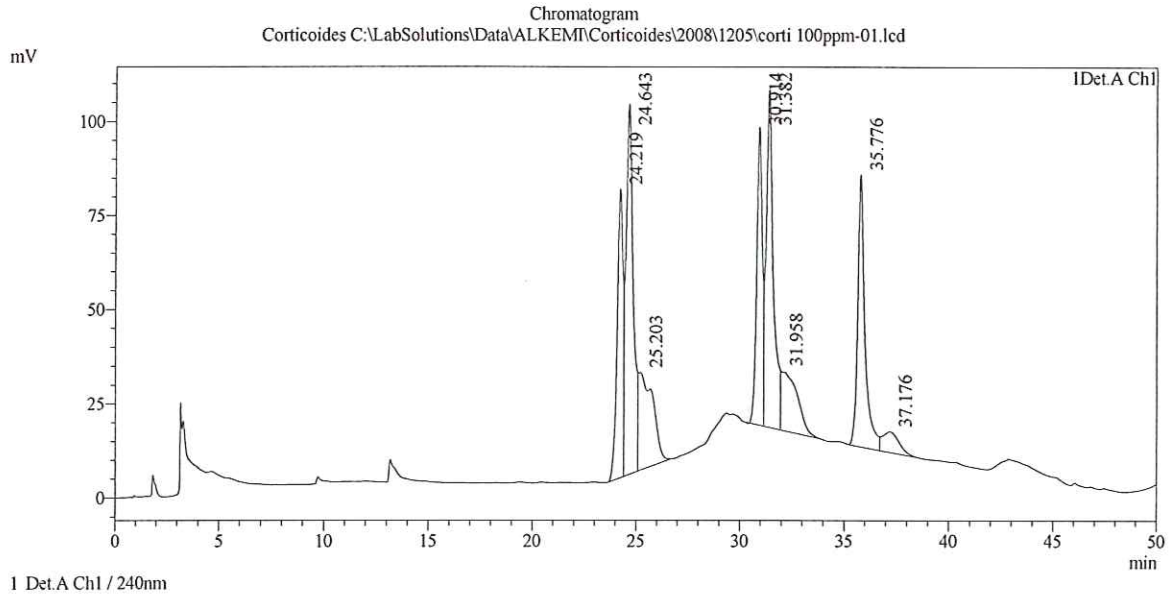
La incertidumbre asociada a los resultados de los Ensayos Acreditados se encuentra a la disposición de nuestros clientes.

ALKEMI, S.A. es Laboratorio Autorizado por la Comunidad de Madrid, por el Ministerio Agricultura, Pesca y Alimentación (Subdirección General de Sanidad Animal), Laboratorio Autorizado por el Ministerio de Sanidad y Consumo, Empresa Colaboradora del Ministerio de Medio Ambiente.

ALKEMI, S.A. C/Tierra de Barros nº 2 -28820-Coslada(MADRID) TFNO:(91) 673 91 49 (6 líneas), FAX: (91) 673 91 48 /E- mail: alkemi@alkemi.es

Sample Information

Sample Name : Corticoides
 Sample ID : Corticoides
 Vial# : 1
 Injection Volume : 20
 Data File : corti 100ppm-01.lcd
 Method File : corticoides-Uv.lcm
 Original Method : C:\LabSolutions\Data\ALKEMI\metodos\corticoides-Uv.lcm



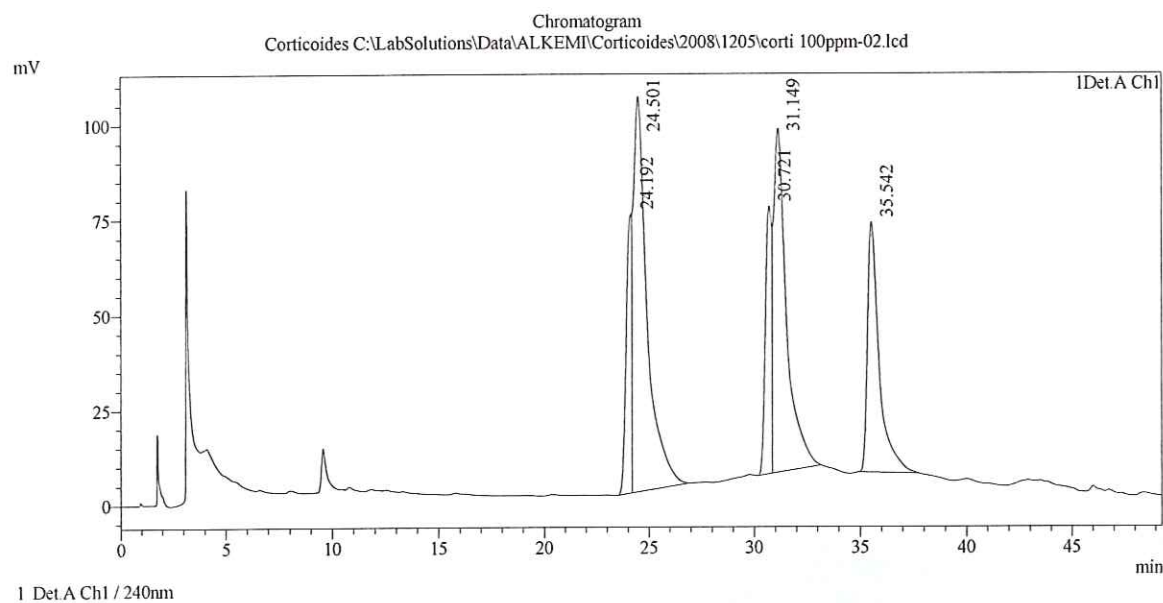
PeakTable

Detector A Ch1 240nm

Peak#	Ret. Time	Area	Height	Area %	Height %
1	24.219	1500203	76792	12.849	16.579
2	24.643	2420104	98361	20.729	21.236
3	25.203	1232151	25979	10.554	5.609
4	30.914	1480603	79114	12.682	17.080
5	31.382	2162431	89534	18.522	19.330
6	31.958	862161	15659	7.385	3.381
7	35.776	1709482	72254	14.642	15.599
8	37.176	308110	5491	2.639	1.185
Total		11675246	463184	100.000	100.000

Sample Information

Sample Name : Corticoides
 Sample ID : Corticoides
 Vial# : 1
 Injection Volume : 20
 Data File : corti 100ppm-02.lcd
 Method File : corticoides-Uv.lcm
 Original Method : C:\LabSolutions\Data\ALKEMI\metodos\corticoides-Uv.lcm



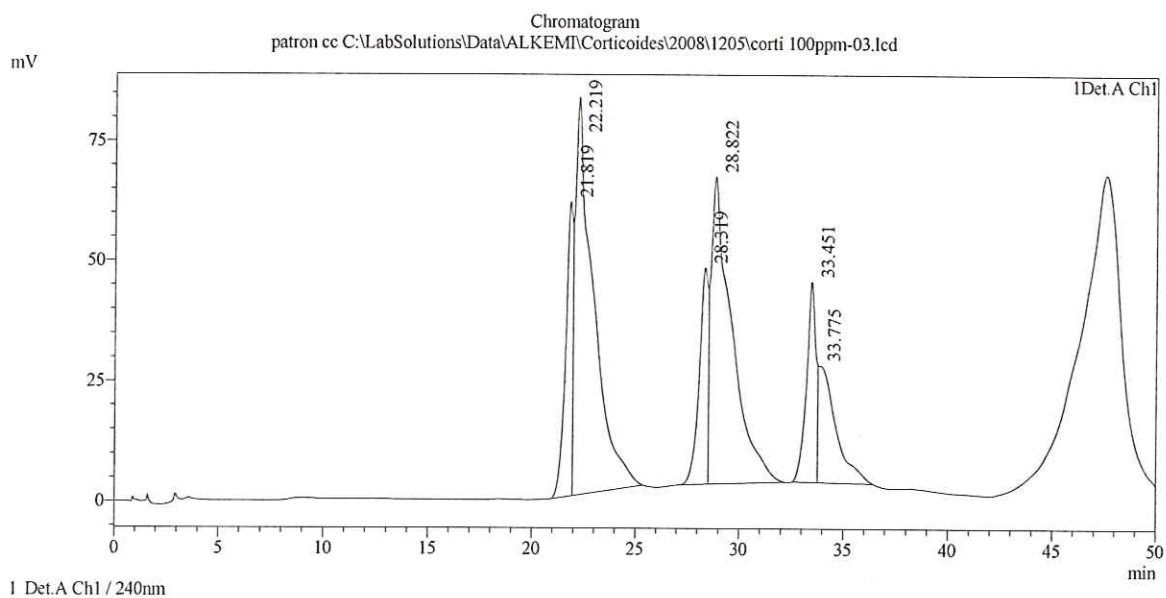
PeakTable

Detector A Ch1 240nm

Peak#	Ret. Time	Area	Height	Area %	Height %
1	24.192	1358701	73423	9.739	18.189
2	24.501	4760926	103909	34.124	25.741
3	30.721	1505939	70274	10.794	17.409
4	31.149	3821502	90334	27.391	22.378
5	35.542	2504588	65731	17.952	16.283
Total		13951656	403670	100.000	100.000

Sample Information

Sample Name : patron cc
 Sample ID : Corticoides
 Vial# : 1
 Injection Volume : 20
 Data File : corti 100ppm-03.lcd
 Method File : corticoides-Uv.lcm
 Original Method : C:\LabSolutions\Data\ALKEMI\metodos\corticoides-Uv.lcm



1 Det. A Ch1 / 240nm

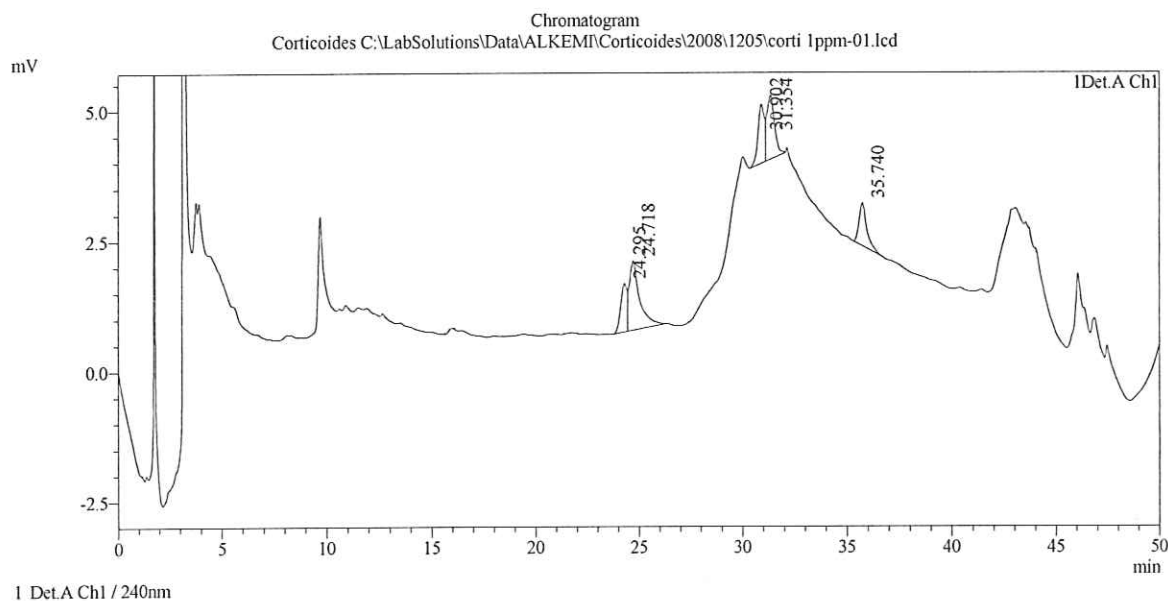
PeakTable

Detector A Ch1 240nm

Peak#	Ret. Time	Area	Height	Area %	Height %
1	21.819	1448617	61167	9.579	19.198
2	22.219	5125472	82767	33.893	25.978
3	28.319	1327381	44931	8.777	14.102
4	28.822	4479861	63854	29.623	20.042
5	33.451	1303182	41614	8.617	13.061
6	33.775	1438197	24275	9.510	7.619
Total		15122710	318609	100.000	100.000

Sample Information

Sample Name : Corticoides
 Sample ID : Corticoides
 Vial# : 2
 Injection Volume : 20
 Data File : corti 1ppm-01.lcd
 Method File : corticoides-Uv.lcm
 Original Method : C:\LabSolutions\Data\ALKEMI\metodos\corticoides-Uv.lcm



PeakTable

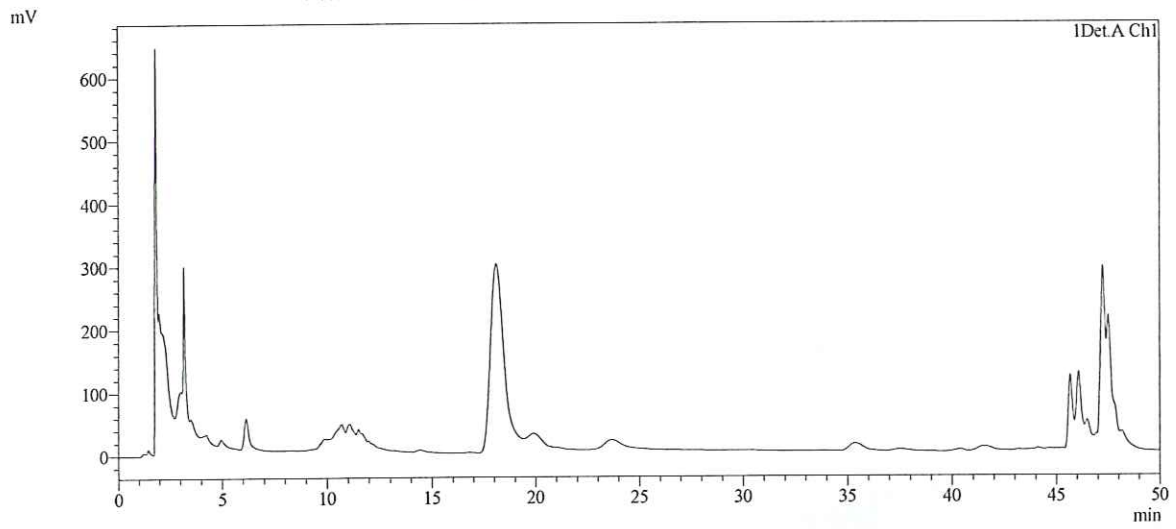
Detector A Ch1 240nm

Peak#	Ret. Time	Area	Height	Area %	Height %
1	24.295	20081	930	13.998	17.158
2	24.718	46758	1325	32.594	24.451
3	30.902	24620	1127	17.162	20.806
4	31.354	31276	1224	21.802	22.585
5	35.740	20720	813	14.443	15.000
Total		143454	5418	100.000	100.000

Sample Information

Sample Name : muestra
Sample ID : Corticoides
Vial# : 3
Injection Volume : 20
Data File : 370922-a-CHAMPÚ BLUE CAP
Method File : corticoides-Uv.lcm
Original Method : C:\LabSolutions\Data\ALKEMI\metodos\corticoides-Uv.lcm

Chromatogram
muestra C:\LabSolutions\Data\ALKEMI\Corticoides\2008\1205\370922a.lcd



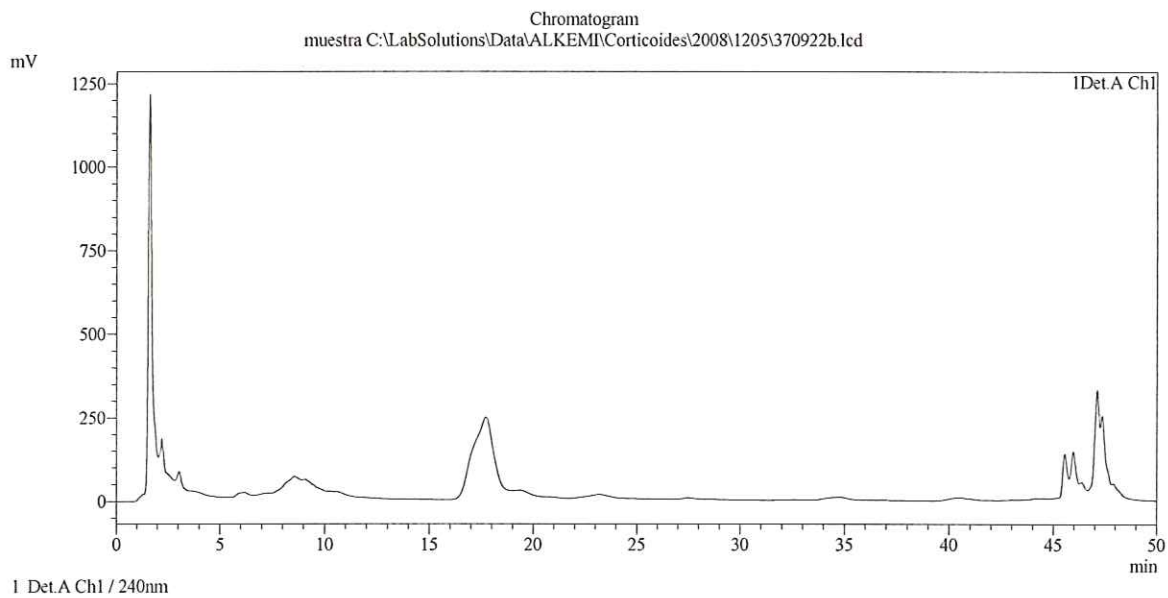
1 Det.A Ch1 / 240nm

PeakTable

Detector A Ch1 240nm

Sample Information

Sample Name : muestra
Sample ID : Corticoides
Vial# : 6
Injection Volume : 20
Data File : 370922-b-CHAMPÚ BLUE CAP
Method File : corticoides-Uv.lcm
Original Method : C:\LabSolutions\Data\ALKEMI\metodos\corticoides-Uv.lcm

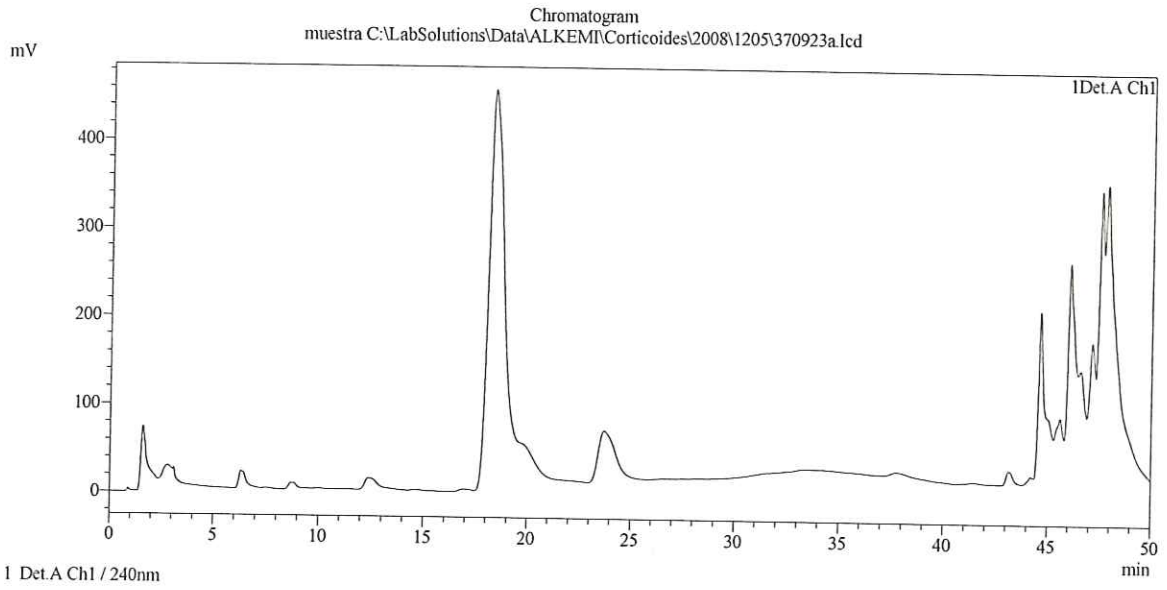


Detector A Ch1 240nm

PeakTable

Sample Information

Sample Name : muestra
Sample ID : Corticoides
Vial# : 4
Injection Volume : 20
Data File : 370923-a-BLUE CAP SPRAY
Method File : corticoides-Uv.lcm
Original Method : C:\LabSolutions\Data\ALKEMI\metodos\corticoides-Uv.lcm

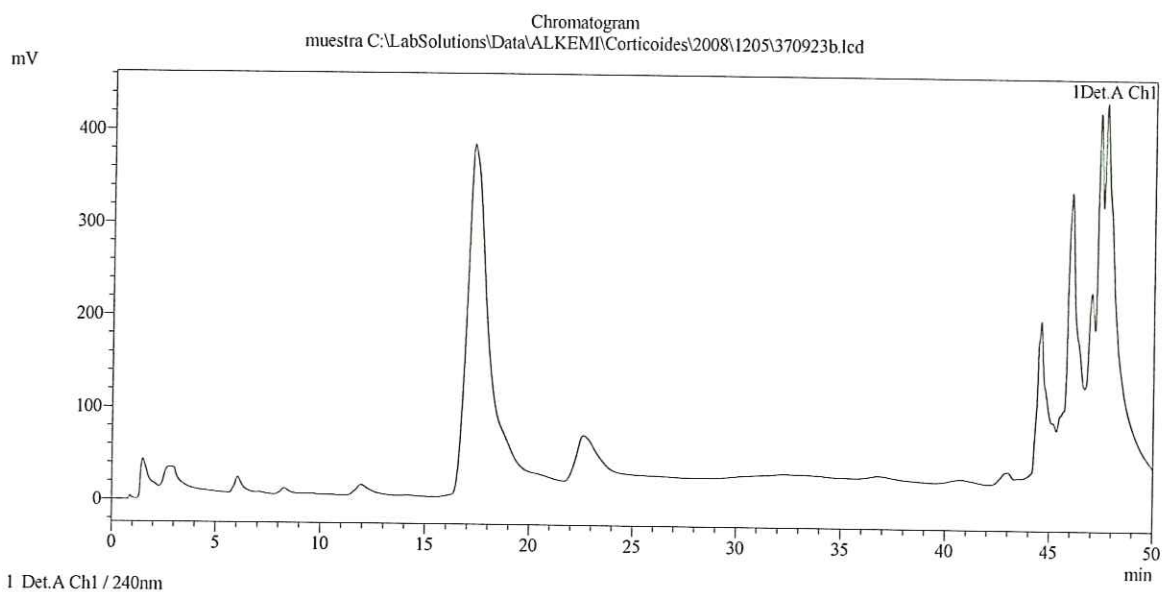


Detector A Ch1 240nm

PeakTable

Sample Information

Sample Name : muestra
Sample ID : Corticoides
Vial# : 7
Injection Volume : 20
Data File : 370923-b-BLUE CAP SPRAY
Method File : corticoides-Uv.lcm
Original Method : C:\LabSolutions\Data\ALKEMI\metodos\corticoides-Uv.lcm

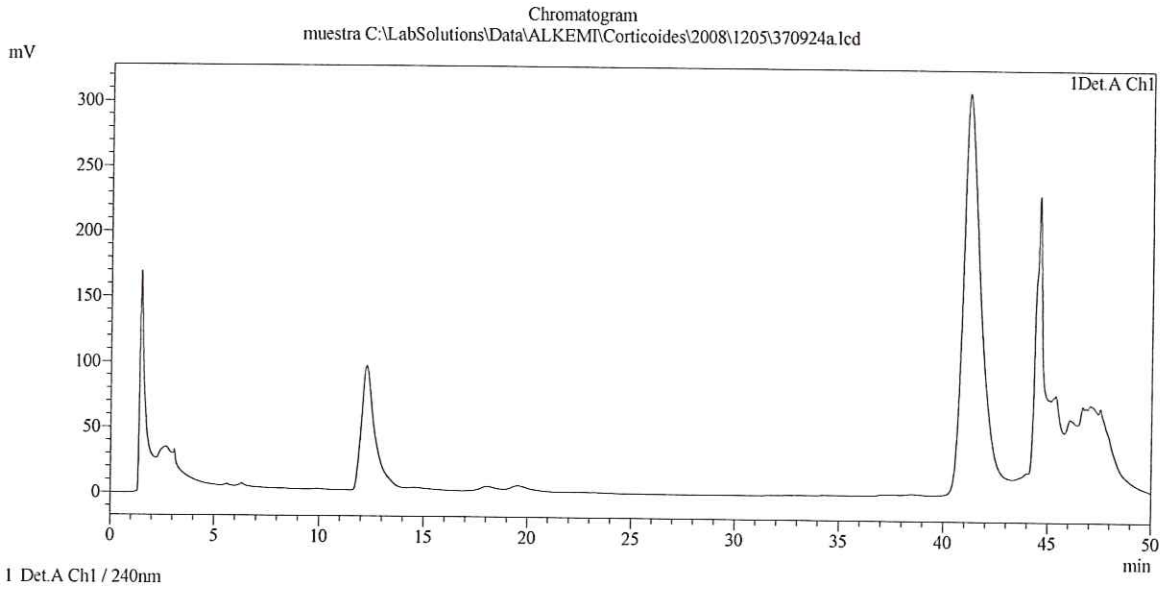


Detector A Ch1 240nm

PeakTable

Sample Information

Sample Name : muestra
Sample ID : Corticoides
Vial# : 5
Injection Volume : 20
Data File : 370924-a-BLUE CAP CREMA
Method File : corticoides-Uv.lcm
Original Method : C:\LabSolutions\Data\ALKEMI\metodos\corticoides-Uv.lcm

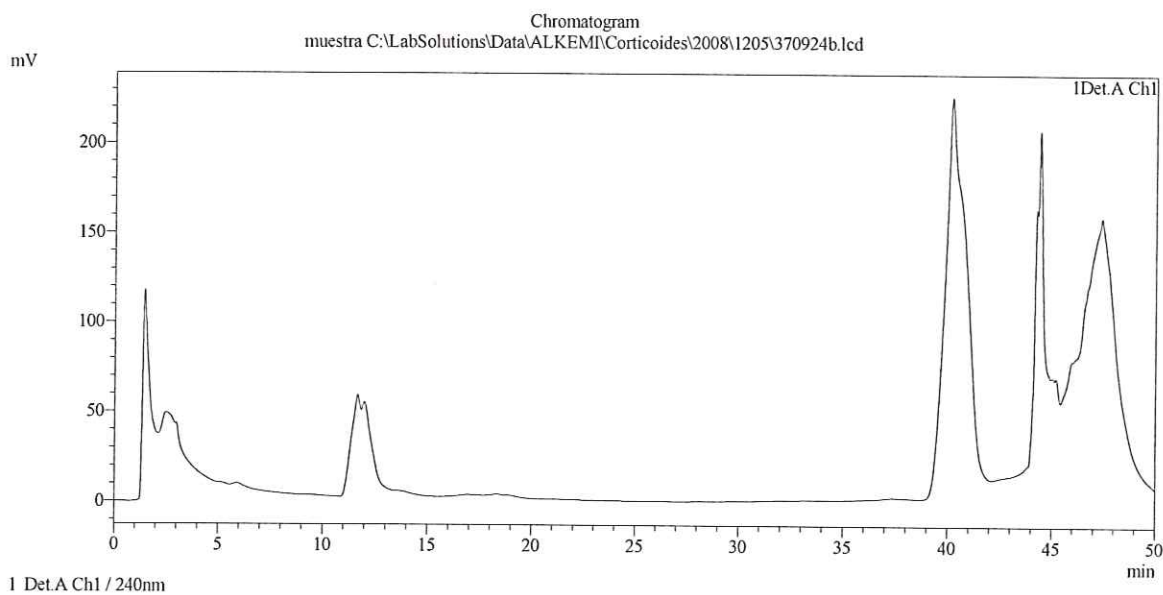


Detector A Ch1 240nm

PeakTable

Sample Information

Sample Name : muestra
Sample ID : Corticoides
Vial# : 8
Injection Volume : 20
Data File : 370924-b-BLUE CAP CREMA
Method File : corticoides-Uv.lcm
Original Method : C:\LabSolutions\Data\ALKEMI\metodos\corticoides-Uv.lcm



Detector A Ch1 240nm

PeakTable